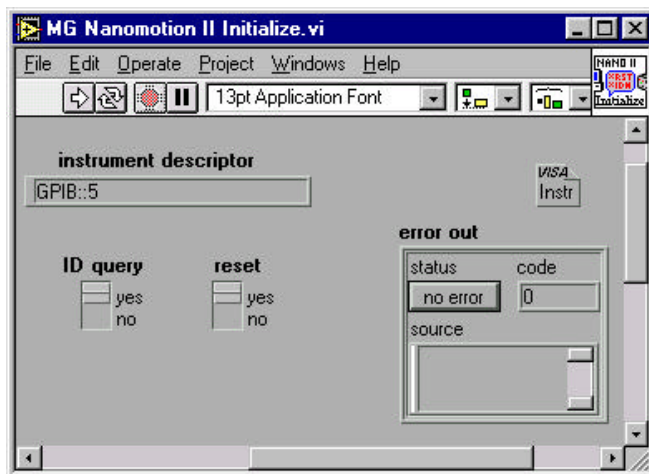
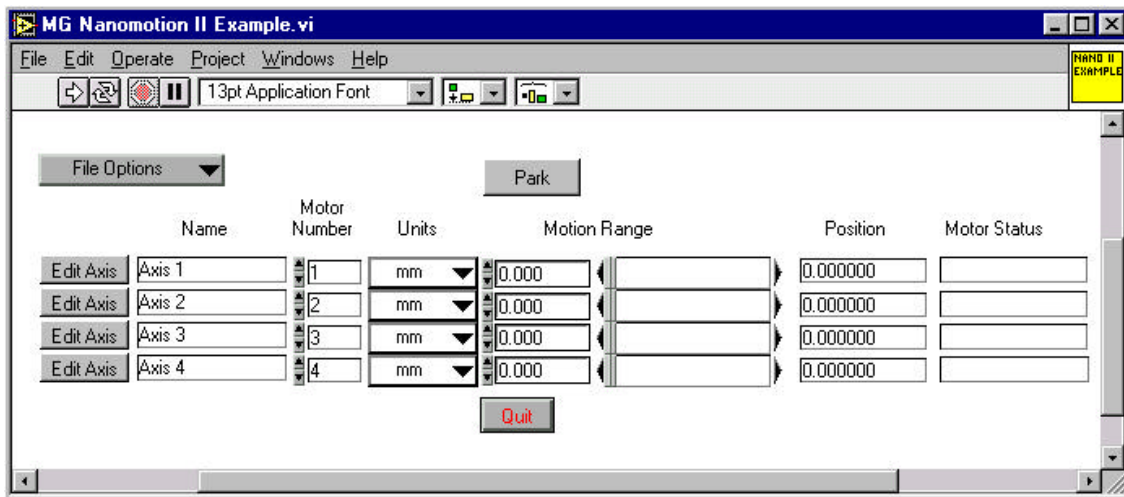


The Problem:

A manufacturer of a micropositioning system required a LabVIEW driver for the system because a number of its customers needed to integrate the system into applications to be written in LabVIEW.

The Solution:

The micropositioning system has a GPIB interface and the writing and debugging of GPIB calls was simple using the built in functions of LabVIEW. All of the instrument's GPIB commands were integrated into a number of VIs (virtual instruments) that could be included into another LabVIEW program. A top level example VI was also written to show how all of the individual pieces could fit together to form a sophisticated application program.



Hardware Used:

Melles Griot Nanomotion II

Software Used:

National Instruments LabVIEW